

# Manifesting Quantum Energies through...

## Sprouts, Shelf-life Experiments

The materials that follow had been shown at various local exhibits on Quantum Agriculture. Most are from trials conducted by students in the seed courses. Evaluation was mostly qualitative, and done on seeds or seedlings. Slides presented are only slightly modified from initial submission. Regret that some contributions/sources are still to be identified.

# 8-day old jatropa

+



-

**With Agnihotra ash**

**With wood ash**

**Sample:**  
**Mungbean**  
**sprouting**



directly sown... with agni ash (left)

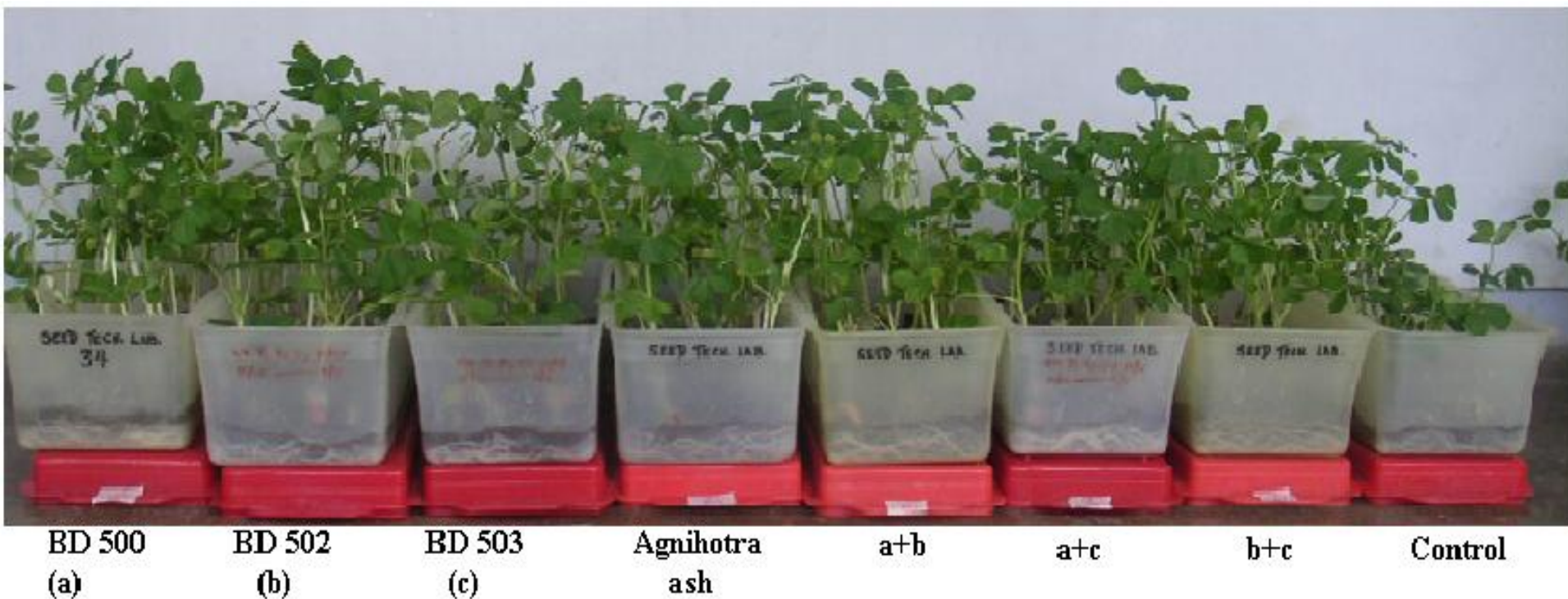
directly sown... without agni ash (middle)

pre-soaked with pinch of agni ash (right)



# Thesis by Mel Cammayo... *Invigorating peanut seed with Biodynamic & Agnihotra...*

Add **quantum enhancers** to water, potentize or vortex, mix with seeds then plant

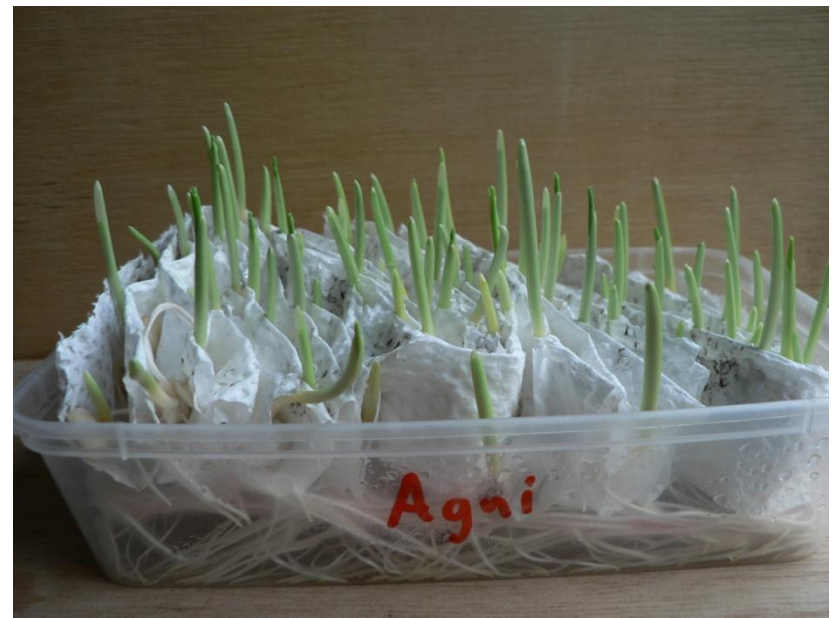
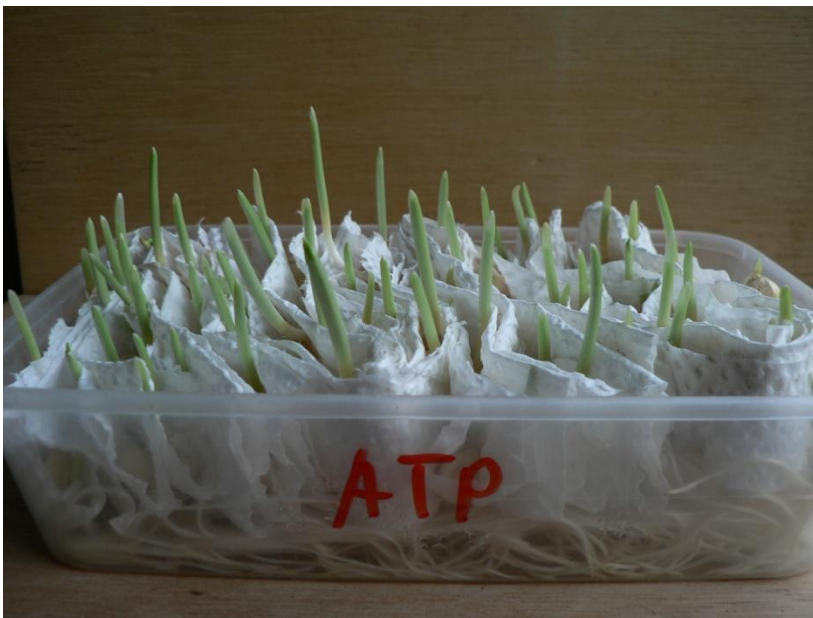


# Agnihotra ash vs Woodash (July 16, 2011)





Water, vermicast water (Vtea), Healing clay (ATP; from Sierra Madre), Agnihotra ash



# Corn seed germination rate

TREATMENTS	MEAN PLANT HEIGHT	MEAN ROOT LENGTH
Control (water)	35.8	87.5
Vermicompost extract	36.7	120
ATP	39.7	110.7
Agni ash	62.4	113.6

# Pechay seed germination rate

TREATMENTS	MEAN PLANT HEIGHT	MEAN ROOT LENGTH
Control (water)	33.1	47.8
Vermicompost extract	49.1	43.75
LAS	0.0	0.0
ATP	40.2	59
Agni ash	41.6	47.5

# Effect of music- *soft vs rock*- on mungbean

Soft music	Percent germination
Replicate 1	90%
Replicate 2	96%
<b>Average</b>	<b>93%</b>

Rock music	Percent germination
Replicate 1	81%
Replicate 2	88%
<b>Average</b>	<b>84.5%</b>

Control	Percent Germination
Replicate 1	94%
Replicate 2	90%
<b>Average</b>	<b>92%</b>

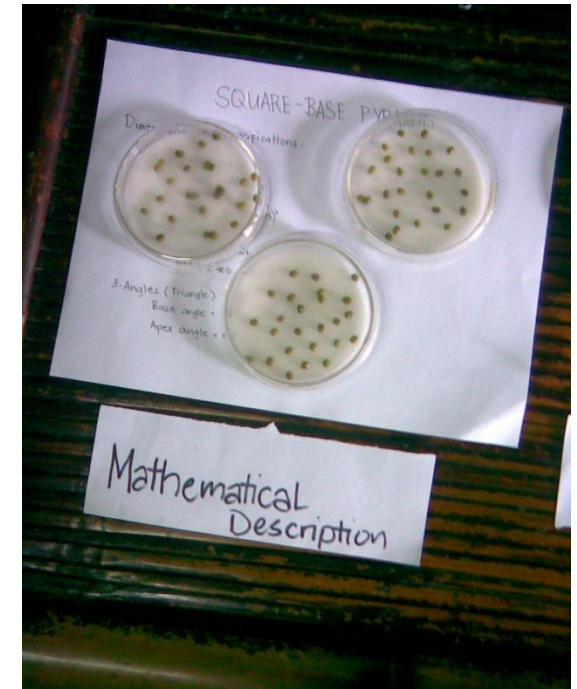
Rock music treatment gave the lowest germination, while soft music and control did not give apparent differences from each other. The vibration and lyrics of the rock songs used may both have contributed to the poor performance of rock music on germination of seeds.



# Pyramid effect on Seed: Methodology

1. 25 seeds were used in a replication; there were 3 replications.
2. Filter papers were used as substrate for germination.
3. Seeds were placed and spaced equidistantly from each other in a petri dish lined with filter paper.
4. Corresponding Treatment:
  - 1) An actual square-based pyramid was made out of galvanized wire
  - 2) A pyramid drawing on piece of paper
  - 3) A written mathematical description of the pyramid
  - 4) The control
5. Germination count was made everyday.
6. Vigor index was then computed, to reflect vigor.
7. Data was analyzed using ANOVA with the help of excel program and the results were interpreted.

# Pyramid power on sprouts: Home-made pyramid and a simple math description of it



Result showed lowest performance of control; mere math description had effect.

# The vigor of seeds given different “pyramid treatments”.

Treatment	Vigor Index (VI)			Average VI	Variance
	Rep 1	Rep 2	Rep 3		
Actual Pyramid	20.5	19.16667	22.5	20.722222	2.814815
Pyramid Drawing	23.16667	22.5	24.5	23.388889	1.037037
Mathematical Description	22.66667	19.66667	20.66667	21.000000	2.333333
Control	16.33333	14	16.66667	15.666667	2.111111



# Results

There were significant differences among treatments.

Seeds placed in the pyramid drawing had the highest vigor index (23.4), followed by seeds placed on the mathematically described pyramid (21.0), then seeds in the actual pyramid (20.7). The control value was lowest (15.7).

## *Insight from one of the members...*

*I'm really surprised with the result. While we were conducting the experiment, the mungbean seed under the improvised pyramid sprouted in just 2 hours after we sowed. I believe that the intention we gave on the experiment also has an effect. This implies the power of mind and symbol are very high.*

## Further insight...

- Pyramids work as an antenna to bring in cosmic energy. This complex energy is a combination of electro-magnetic and cosmic waves. The increase in vigor can be associated with the increase in the total energy in the system. Through the pyramid, the seed was capable to tap subtle energies emitted by the cosmos. The pyramid is a model of space-time matrix. It has the four dimensions which include the three dimensions of space and one dimension of time. It also has the concept of orientation, the four corners representing the four directions (north, east, west and south) and the four seasons (this is where the time dimension comes in). This order and organization allows the pyramid to access subtle energies that are not available to other bodies. The subtle energies increase the life force of the seeds, thus vigor is increased.



# Vase life of cut flower with pyramid (by Flor Janoplo)

Use of 3-sided pyramid (Ernie Baron's aluminum rods) and bottom of agnihotra pyramids for shelf-life enhancement of rose cuttings



Placed under Ernie Baron's pyramid.



**Control** *easily dried up and wilted*



Placed under inverted copper pyramid.

# **Jatropha seed germination enhancement**



**Vortexing was done prior of pre-soaking.**



**Pre-soaking of jatropha seeds**

# Results

## Treatments:

**T1 – 5ml. Agnihotra ash diluted with 350 ml of water**

**T2 – 5 ml. ATP /Sierra Madre clay diluted with 350 ml of water**

**T3 – 5 ml. Indian clay diluted with 350 ml of water.**

**T4 - 5 ml. EN grow diluted with 350 ml. of water.**

**T5 – Control (pure water)**

**1. Early to germinate – ATP and Agnihotra ash – 3 days after.**

**2. % germination – ATP 80%**

**3. Stem diameter – ATP & Agnihotra ash**

**4. Root length after 10 days – 90 cm.ATP & 85 cm Agnihotra ash**

**5. Plant height after 10 days – 220 cm. Agnihotra ash, 215 cm ATP**



# Visual performance of jatropha



# Germination enhancement of Pechay by Joel Adorada and Con Ayllon

**Days to sprouting, germination count (%) , seedling height, root length and stem diameter after 10 days of germination. Data ave of 3 reps, with 20 seeds per rep.**

<b>Treatment</b>	<b># of days sprouted from date of planting</b>	<b>% Germination</b>	<b>Height(cm)</b>	<b>Root length (cm)</b>	<b>Stem diameter (cm)</b>
<b>1. ATP</b>	<b>4 days</b>	<b>80%</b>	<b>215</b>	<b>90</b>	<b>4</b>
<b>2.Agnihotra Ash 1.4%</b>	<b>3 days</b>	<b>80%</b>	<b>220</b>	<b>88</b>	<b>4</b>
<b>3. Indian healing clay</b>	<b>5 days</b>	<b>50%</b>	<b>200</b>	<b>85</b>	<b>4</b>
<b>4. EN Grow</b>	<b>8 days</b>	<b>45%</b>	<b>190</b>	<b>85</b>	<b>4</b>
<b>5. Vermi cast</b>	<b>10 days</b>	<b>30%</b>	<b>190</b>	<b>86</b>	<b>4</b>
<b>6. Control(water only)</b>	<b>11 days</b>	<b>25%</b>	<b>185</b>	<b>85</b>	<b>4</b>

## OBSERVATIONS:

- ❑ Jatropha seeds sprouted earlier and had highest germination when applied with ATP & Agnihotra ash.
- ❑ In terms of plant height and root length , Agnihotra and ATP performed better compared to other treatments.
- ❑ For stem diameter, all treatments have the same result.



# Sorghum Seed Germination Enhancement: Methodology



- ✱ A plastic tray (5x8) was prepared within the residential compound for this trial.
- ✱ Sterilized carbonized hull was used as soil medium for the trial.
- ✱ Five (5) treatment with Three (3) replicates for each treatment was used on this germination test.
  - ✱ Vortex (water)
  - ✱ Control
  - ✱ IMO (Dr. TCM)
  - ✱ Agni Ash
  - ✱ En Grow
- ✱ Sorghum of 100 seeds for each tray were planted, after germinated in the nursery and directly hardened on its open plot.
- ✱ A separate preparation for watering on all the initial trials being taken. (1:10 dilution ratio).
- ✱ Plant height (cm) was measured at 7 DAP as an initial data
- ✱ Data were organized, analyzed and graphed after initial results.

By Con Ayllon

## *0 DAP Imbibing with the treatment DAY*



# Results

## 7th DAP gathering of seedlings height (cm)

Date	DAP	Rep 1	Rep 2	Rep 3	Rep 4	Rep 5	Rep 6	Rep 7	Rep 8	Rep 9	Rep 10	Rep 11	Rep 12	Total	Mean
22-Sept	1	0	0	0	0	0	0	0	0	0	0	0	0		0
<b>Control</b>	7	11.7	8.9	8.9	11.8	11.5	8.5	9	10.1	11	10.7	11.9	10.8	124.8	<b>10.4</b>
28-Sept															
<b>Vortex</b>	7														
28-Sept		9.7	12.6	10.5	10.8	12	13.5	12.6	10.7	13.4	9.2	13.2	11.3	139.5	<b>11.63</b>
<b>En Grow</b>	7														
28-Sept		10.4	9	11.5	13.2	12.5	9.6	14.6	10	11.3	9.3	11.2	12.4	135	<b>11.3</b>
<b>IMO</b>	7														
28-Sept		16	18	18.3	20.4	14.5	19.3	15.5	19.6	15.6	16.5	20	13.2	207	<b>17.2</b>
<b>Agni Ash</b>	7														
28-Sept		15.4	17.8	15	17.7	19.4	15	17.5	16.7	18.1	18.5	19	15	205.1	<b>17.1</b>

# Effect of agnihotra ash on mungbean given positive or negative words

## Methodology

Maricar, et al

1. Two treatments, 3 reps, 25 seeds each
  - w/ ash from paper written curse words
  - w/ ash “ “ “ encouraging words
2. Words of encouragement or curse were written on paper which was then burnt. The resulting ash was then put into the petri dish with seeds.
3. Germination was observed after 3 days.

## Result

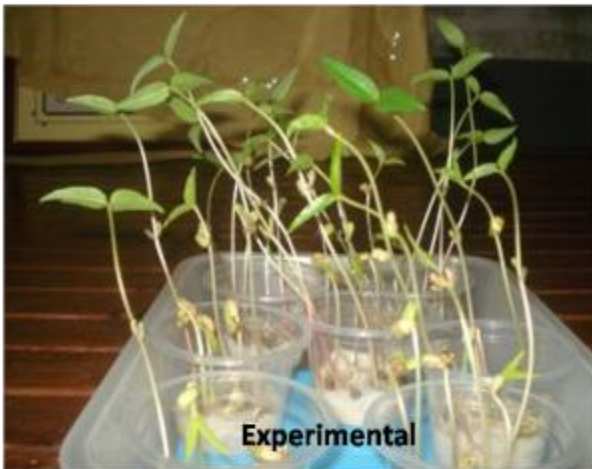
- The treatment with encouraging words had a 100 % germination
- The seeds w/ curse words had a poorer % germination (no data presented).



# Seed sprouts exposed to baybayin symbols

*(baybayin is ancient Filipino script summarily eliminated during the Spanish regime)*

## **TAPAL TANIM**



Trials by Dr.  
Bonifacio  
Comandante  
with Seed  
Tech-UPLB



# More trials... different baybayin “letters” on sprouts



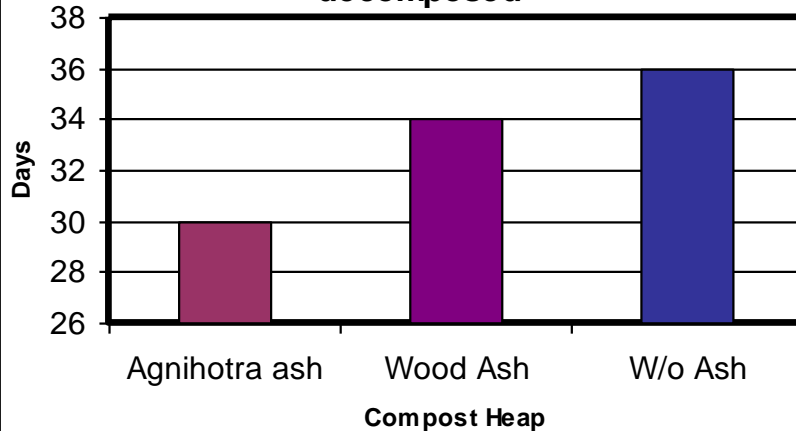
**Special project of High School students who got  
interested in agnihotra**

**“Comparing Agnihotra ash  
and wood ash in  
Composting”.**

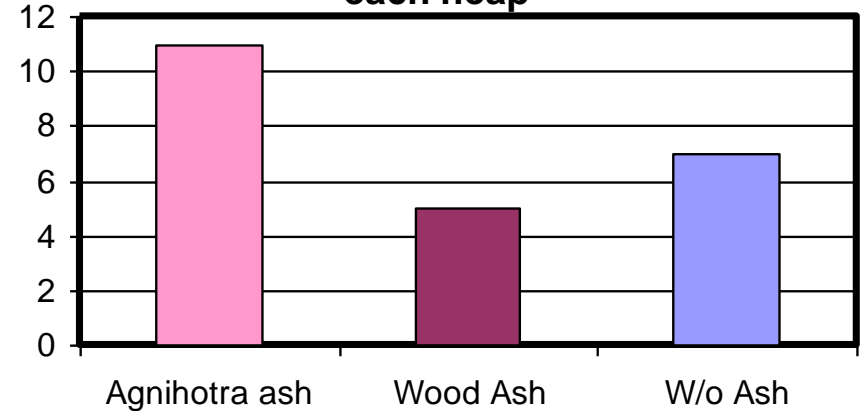
*Science Project of Don Pedro Guevara  
Science High School  
Sta Cruz, Laguna. 2008*

# Agnihotra ash on composting

The number of days for each heap to decomposed



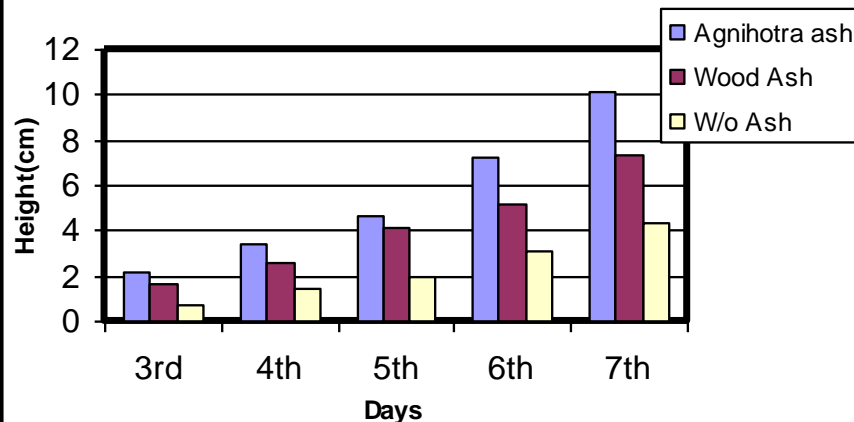
The number of earthworms in th soil of each heap



Compost maturation rate

Earthworm population in compost

Comparison of the height of jatropa plant in each compost heap



Height of plants on compost heap

# Trial 1- Cooked rice after 1 week

Agnihotra  
Mantras 3x

Fear, Doubt  
Feeling 3x

Ignore, No good  
thought 3x

Beautiful, Joy  
Feeling 3x



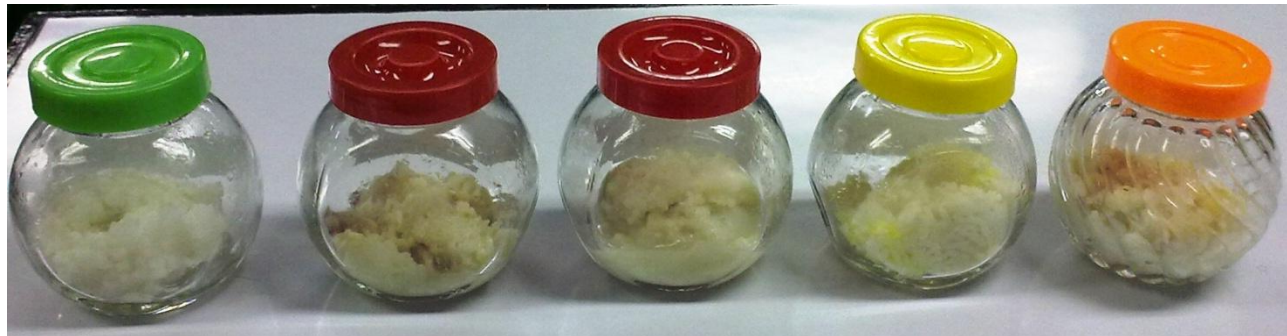
Side with label



Back side



# Trial 2- Cooked rice after a week



Shared by a Horst  
Hellman; done by  
a young child

- 1) "Thank you"
- 2) "you idiot"
- 3) ignore

# Reis – bedankt, beschimpft, ignoriert

Ein Versuch von Sonja über 4 Wochen, angeregt durch Dr. Emoto, Japan

*Sonja, 15, hat am 25.12.2010 ein interessantes Experiment abgeschlossen: 3 Gläser mit Reis und Wasser drauf, 4 Wochen in ein Zimmer gestellt, jeden Tag ging sie zu dem Glas 1 und sagte DANKE; beim Glas 2 sagte sie DU IDIOT und Glas 3 hat sie ignoriert. Ergebnis. Glas 3 stank fürchterlich und schimmelte sehr stark, Glas 2 schimmelte und roch etwas, Glas 1 hat der Reis in einer Ecke Schimmel und war nur leicht riechend, aber nicht unangenehm. Ich habe das auch fotografiert.*

vielen Dank für dieses Experiment und Bild. Es ist ein sicherer Nachweis dafür, dass wir wirklich in der Zeit angekommen sind, da die Natur ohne den Menschen nicht weiter existieren könnte. Es ist die Aufmerksamkeit des Menschen, die die Naturprozesse am Leben erhält. Die göttliche Schöpfung ist endgültig zu Ende gegangen und die sich seit Golgatha vorbereitende neue "menschliche Schöpfung", das heißt die Weiterführung der göttlichen Schöpfung durch den Menschen, ist Realität. Die durch das menschliche Ich geleistete Aufmerksamkeit ist die Quelle, durch die das Göttliche weiter wirken kann. Auch wenn der Mensch nicht vollbewusst damit umgeht, es ist seine Aufmerksamkeit, die wirkt. Das zeigt besonders im Experiment der "Idiot", was ja keine Schmeichelei ist, aber dennoch menschliche Aufmerksamkeit.



*Sonja got the idea by Dr. Emoto from a video and did it: 3 jars with rice and water stood in the same room in 20 cm distance to each jar. Every morning she said thank you to the left jar, you idiot to the middle one and she ignored the right jar. After 4 weeks you got this result. The right jar was terribly stinking, the middle one a bit smelly and the left smelled fruity.*

This experiment is an objective evidence that the time is there, where nature is not able to exist without the human being. It is the attention and mindfulness of the human being which keeps the nature-processes alive. God's creation has come to an end and since the Mystery of Golgotha a new „human creation“ is preparing and this means: the further creation through the human being is reality now. The source of this is the human mindfulness of the I or

higher self and then the divine is able to work further on. It is the mindfulness which works although the human being is not fully conscious handling it. This is shown by „the idiot“-experiment, what is not polite, but nevertheless there is human attention.



# Response of culture media with agni ash and healing clay from Sierra Madre

Fungus are unable to colonize the area with treatment



# Experiments: Rice keeping quality with words and intentions *(from the internet)*





# The Use of Agni ash on the growth of Mungbean Sprout

(A Preliminary Study by Dr. Perlita Nuevo and Ms. Gloria Masilungan- Postharvest and Seed Sciences Division, Crop Science Cluster, UPLB. Sept 2009)

## **Methodology**

Green mungbean seeds were purchased from Los Baños market

Seeds were selected removing broken and off-colored seeds

Seeds were washed thoroughly and germinated at room condition (- and + 4% agni ash)

Germinated seeds were washed and seedcoats were removed

Sprouts were placed in plastic containers lined with wet paper towels

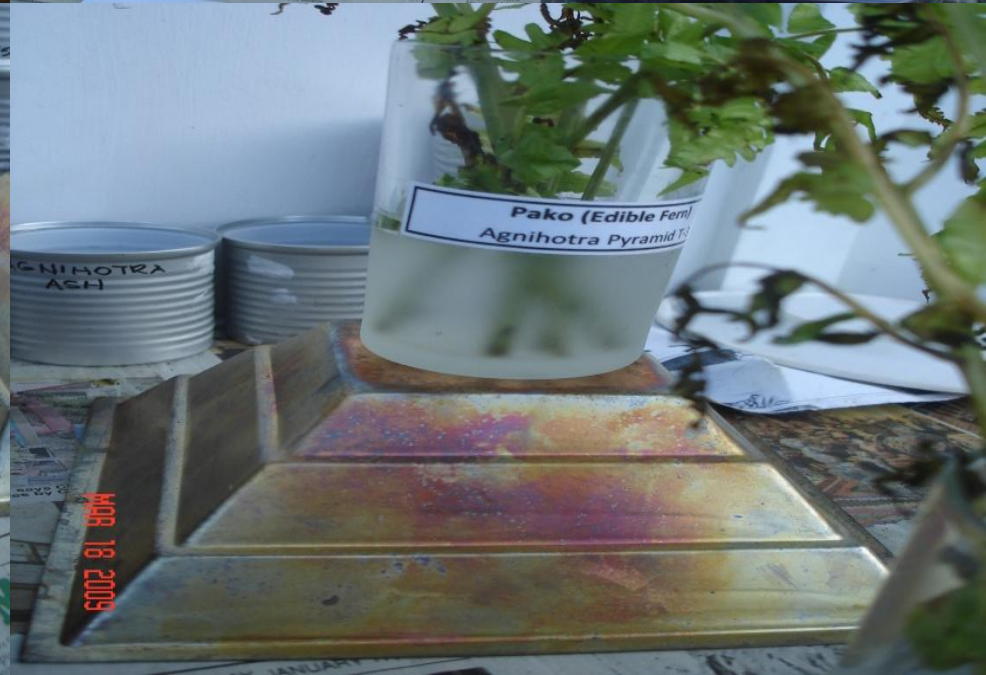
Sprouts were stored at 15°C

Length of stem and hypocotyl and number of secondary roots of mungbean sprouts treated with 4% agni ash solution

Treatments	Stem Length (cm)	Hypocotyl (1 <sup>o</sup> root) (cm)	Seedling length (cm)	Number of 2 <sup>o</sup> root
- Agni ash (control)	42.50	30.95	73.45	11.0
+ Agni ash	47.48	34.06	81.54	9.5

*Sprouts treated with agni ash are longer by 8 cm than the controls. However, there are more (1.5) secondary roots which have developed in the controls than those treated with agni ash.*

Experimenting  
with agni  
pyramid and  
Ernie Baron's







E.B. Pyramid



Agni Pyramid



Agni Ash



Micro H<sub>2</sub>O



Control



01 DAP



E.B.Pyramid



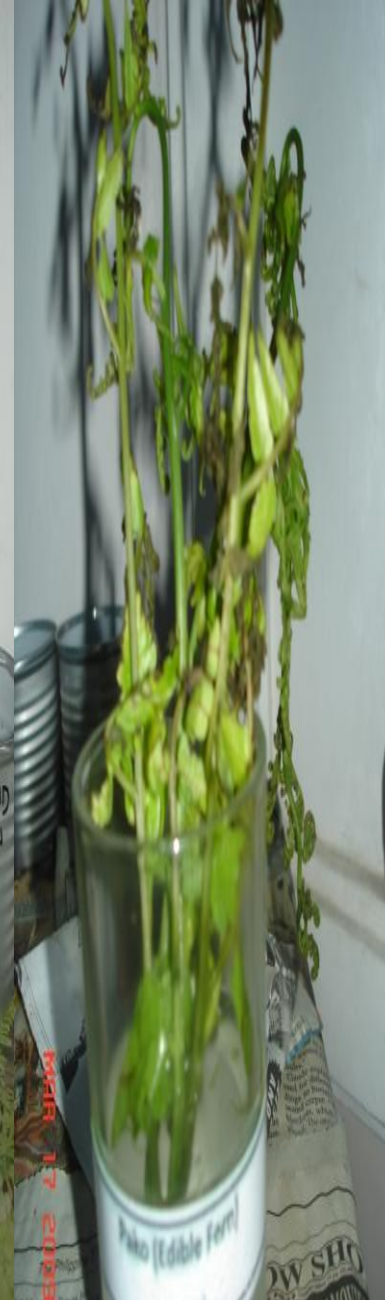
Agni Pyramid



Agni Ash



Micro H<sub>2</sub>O



Control



03 DAP



E.B. Pyramid



Agni Pyramid



Agni Ash



Microwaved  
H-0



Control





Stressful,  
messy, noisy

Korean greetings

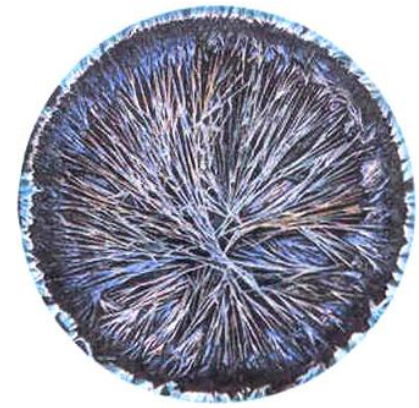
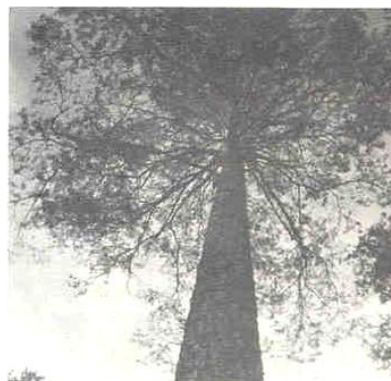
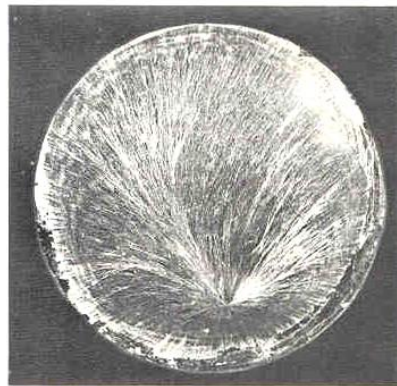
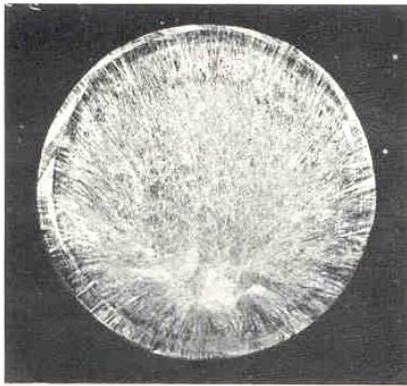
control

# From Literature



## Formative forces

Crystallograph of bent and straight tree



without and w/ sulfur

Raw carrot



## Photon Emissions from Organically Produced Onions and Carrots

