



<http://frankchester.com/about/>

What is this website all about?

It is pointing to a science of the future... A science that studies the objective structure of a manifested form and explores the form's basic intention. This site provides example of how this can come about.

Frank Chester

How he may help MISSION

<http://www.imaginalmission.net/web2.0/>

Prepared by Pam Fernandez for Cebu Imagenal's MISSION Event

Why I am inspired with FC

- I am looking for ways to quantumize my own work
- What he teaches ...
 - *Adds to the sustainability and quantum effect of MISSION*
 - *Provides an approach to societal transformation through science cum art*
 - *Reconnects us back to nature and the greater whole*
 - *Puts into reality Steiner's indications*
- He demonstrates alchemy, transmutation and transubstantiation in visible terms!
- He effectively merged art, science and function
- He gives an organic function, like the lemniscate, a geometry!



Who is Frank Chester?

He is many things...

- He is working on something that is multi-dimensional and so exciting! So inspiring!
- Through his work, he can be a binding force of the different sectors of society.
- He can deepen our knowledge, awaken our hearts and move us to action.
- He can connect us to the reality beyond the visible and beyond ourselves, up to the cosmos and beyond!

- He is an artist creating work that is not only beautiful but lawful... or is based on **mathematics** and **science**... and exist in places in the universe, including the human heart.
- He is an **artist, sculptor and geometrician** who lives in San Francisco, USA.



- He discovered a new geometric form never seen before... **a form with seven equal faces. In the history of mankind this geometry has never appeared on the earth before.** **6 sides** → **? 7** → **8 sides**
hexa- *hepta-* *octa-*
- He has been teaching **sacred geometry** at the **Waldorf teacher training** program in San Francisco.
- He **developed an objective, lawful process** using science and art wherein the **invisible world could be made visible.**

F Chester, chestahedron and the number 7:

relation to Steiner, alchemy, earth elements, heart form and function

“Since encountering the work of Rudolf Steiner, Frank has been exploring the relation between form and spirit. This has led him to take up research concerning the number seven, and in 2000 he discovered a new geometric form never seen before.

Putting this form through the [alchemical transformative process](#) of Earth, Water, Air, and Fire, many previously unknown geometric structures have emerged.

Also this geometric form demonstrates a remarkable correlation to the form and functioning of the human heart.

On the basis of experimentation with various related geometric forms and the movement of water in a vortex, Frank is uncovering indications concerning the relationship between etheric formative forces and the geometry, structure, and physiology of the human heart.

Thus the form is called the Chestahedron, both after its discoverer and because the form relates to the geometry of the heart, which sits in the chest.

- Almost 10 years of work have led him to see how the discovery relates to the **human heart**, to the **geometry of the Earth**, to **sacred architecture**, and to inspiring others about the awe-inspiring connection between seemingly abstract geometries and the dynamism of life.
- Because of his work... **Finding a spirit form before it becomes visible is now a lawful reality.**

Other applications:

- Now the artist can apply nature's laws of change and substantiality, which consists of **finding three-dimensional movements, vortexes, minimal surfaces, dualism, Stellations, inversions, transformations and the element of time.**
- **Architecture based on the human heart**

Societal transformation based on human heart

We can transform art from its former subjective form into something new: healing and lawful--where science, creativity and religion come together in a seamless, objective whole.

The Art of the Heart shows us a way into the future.

- **FC's discovery can now be validated as having the configurations used in the design of the human heart. From this work new insights have developed on heart functioning.**

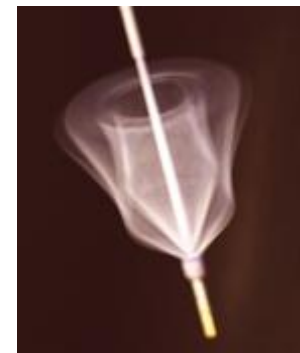
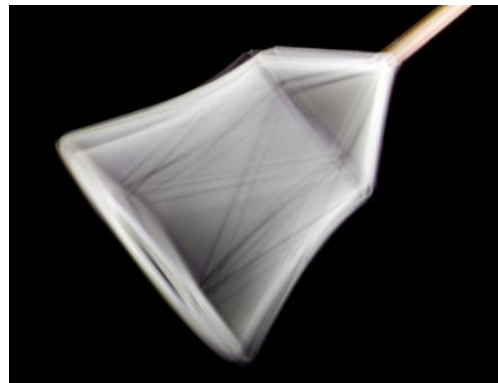
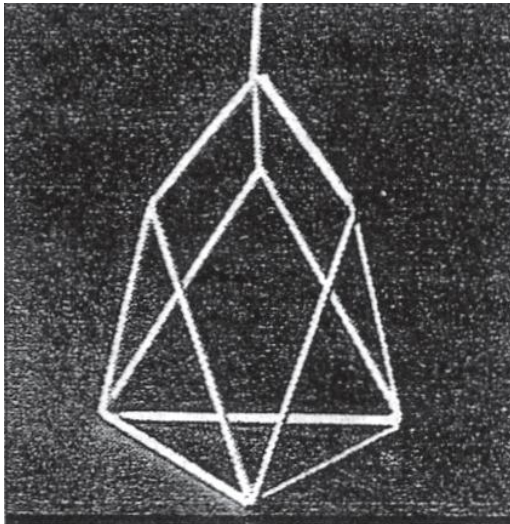
The Heart is NOT a PUMP!

- He provides insight as to **How the heart will be changed to a new organ enabling the perception of the etheric.**
- The Heart is central in his work... indeed a good subject if we agree that... **The heart of the revolution is the revolution of the heart!**

***His discovery and process is opening up
significant breakthrough questions within the
fields of art, health, human development,
and the harmonies within universal design
and mathematical formulae.***



The heptahedron or chestahedron is solid , but thru FC's research and sculpture... they transform... as they are changed, reversed or inverted



A bell that is half filled with water, when rung or played, helps people cross the threshold (or those who are dying).

Chestahedron when turned on air becomes 2 bells, inner and outer

The screenshot shows a web browser window with multiple tabs open, including 'About Sacred Geom...', 'Quantum Agricult...', 'Edit Post < Quantu...', 'mission of imagin...', 'Photo and Video G...', 'Vortex formations', '(20662 unread) - p...', '(3) what is IN in yo...', '(3) Pamela Fernan...', and '(3) Facebook'. The address bar shows the URL: www.youtube.com/watch?v=JD9aDo_rz6l&feature=player_embedded#!.

The YouTube page displays the video 'Vortex formations and the Chestahedron -- with Frank Chester' by the channel 'truebotanica'. The video player shows a person's hands holding a transparent, wireframe structure (the Chestahedron) over a dark surface. The video has 123 views and was uploaded on Sep 20, 2011. Below the video player, there are buttons for 'Like', 'Add to', 'Share', and 'Print', along with a 'Show more' link.

On the right side of the page, there is a list of recommended videos:

- 1 Frank Chester Sacred Geometry by Frank7Chester 5,921 views 8:19
- Chestahedron from a transforming by arapacana 1,318 views 0:40
- 3 Frank Chester at the Goetheanum by Frank7Chester 746 views 3:12
- 2 Frank Chester Sacred Geometry by Frank7Chester 3,056 views 8:13
- 1 Frank Chester at the Green Meadow by Frank7Chester 3,315 views 7:47
- 7 Frank Chester Interview Youth by Frank7Chester 409 views 3:46
- 5 Frank Chester at the Goetheanum by Frank7Chester 784 views 9:16
- 7 Frank Chester at the Goetheanum by Frank7Chester 594 views 7:29
- 2 Frank Chester Sept 30 2009 at the by Frank7Chester 88 views 3:41
- Frank Chester a slideshow by Frank7Chester 719 views 2:16

The Windows taskbar at the bottom shows icons for Internet Explorer, VLC media player, Microsoft PowerPoint, Google Chrome, Skype, VLC media player, and Microsoft Word. The system clock in the bottom right corner indicates 8:49 AM on 8/16/2012.

http://www.youtube.com/watch?v=JD9aDo_rz6l&feature=player_embedded#!

Chestahedron - Frank Chester

In 2000 Californian sculptor, Frank Chester, discovered a new seven sided form with seven points and twelve edges. The first heptahedron of this configuration consists of 4 triangles and 3 quadrilaterals and each of the seven planes has an equal square surface area.

If this heptahedron is rotated around the vertical axis it forms a bell-like external profile with a cone above a hyperbolic curve. Calling on his experience in art and engineering design, Frank began rigorous mathematical experiments on this form. Using only straight lines that intersect at strategic points he was able to map out the precise measurements of the bell in diagrammatic form.



Chestahedron



Hyperbolic Curve

By constructing sturdy maquettes, connecting the twelve edges, Frank pursued his investigations into further possible transformations of this heptahedron. The appearance of a bell-type figure can easily be observed when spinning the model by hand. The lines visible in the image are the straight edges of the maquette.

Spinning another maquette at high speed in water revealed the phenomena of a vortex. Unraveling the complexities of the geometric foundation of the Chestahedron reveals an understanding of the structure of bell forms. Following studies using fluid dynamics and the Chestahedron, Frank Chester concludes that bells are the combination of accelerating and decelerating vortices.

In June 2010 Freeman College, part of Ruskin Mill Educational Trust, cast a new bell for the college. This new bell takes its outline and proportions from the bell-type form created by spinning the Chestahedron model.

Referencing the writings of Rudolf Steiner and in recognition of Frank Chester's work on these design concepts in relation to the geometry of the human heart, the Freeman College bell is called the Heart Bell.



Spinning bell-type form

THE CHESTAHEDRON

The Chestahedron is a new geometric form discovered by Frank Chester. It has seven faces of equal area, is comprised of four equilateral triangles and three quadrilaterals, and has a surprising amount of unique geometric properties. Frank's research has revealed a number of promising potential areas of application of this form, from architecture, vortexial mixing, beehive construction, bell-making, and the interior structure of the Earth, to the inner geometry of the human heart, not to mention its purely aesthetic applications.

It started with seven sticks in the mud...

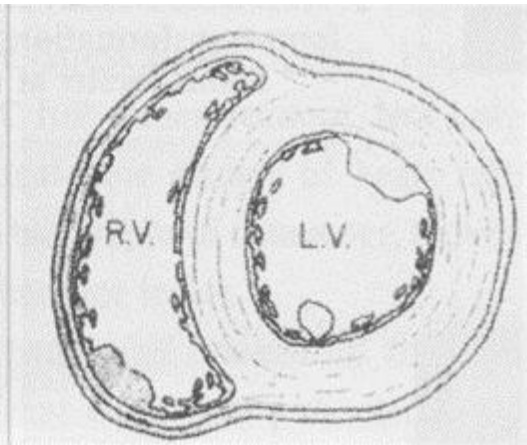
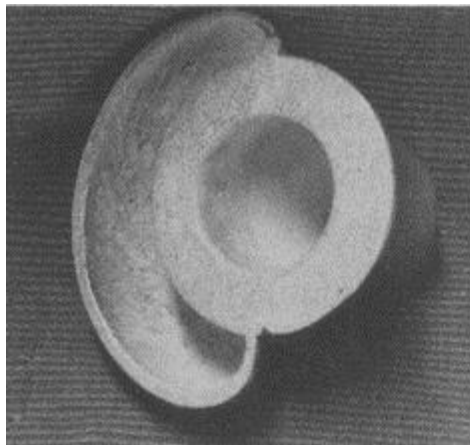
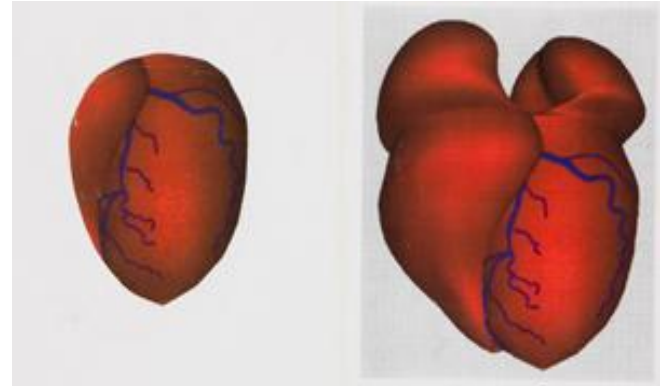
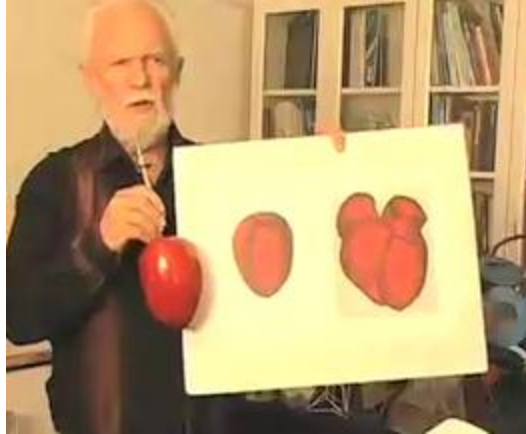
ARTICLE *
BY ULRICH
MORGENTHALER,
TRANSLATED BY DR.
KARL MARET

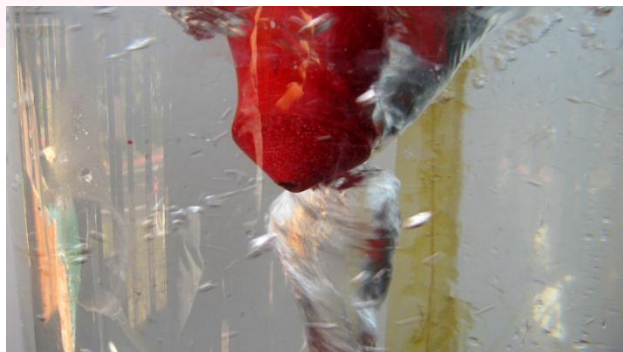
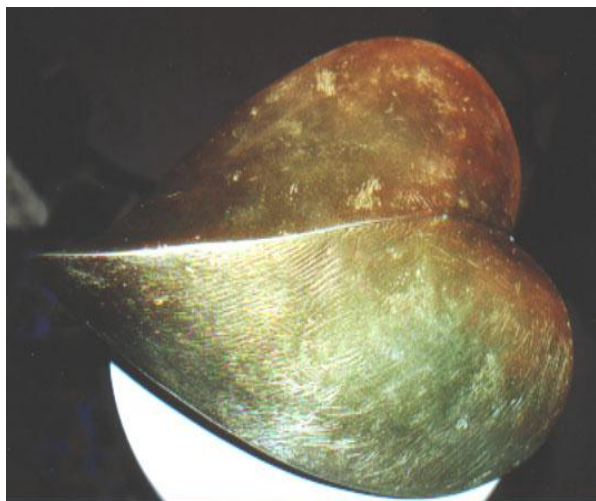
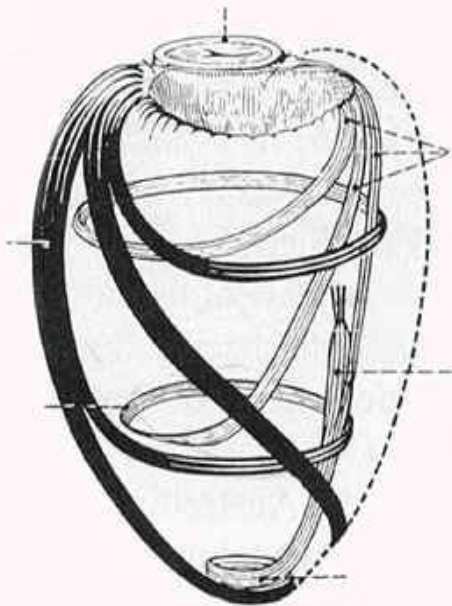
Occasionally one is blessed with the good luck to be allowed to meet a phenomenal human being: The kind of person who has followed his individual

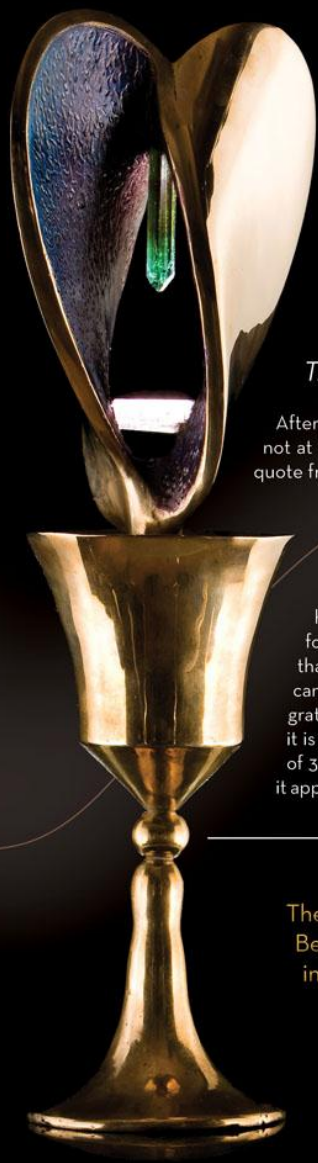
The Chestahedron

path to discover mysteries of our world, and who then continues, without distraction, to follow his path in order to bring one treasure after another into the light and life. Such human beings

The Heart from the chestahedron!







This solid has seven surfaces with exactly the same surface area. It consists of four equilateral triangles and three additional, four-sided surfaces which resemble kites. It shares the same property with the five regular platonic solids in that each of the seven surfaces has the same area. It is unique in that it contains two different shapes and two different side lengths while in the five platonic solids these are always the same. Interestingly, Chester could utilize two circles in the ratio of the golden section (Φ) to lawfully and reproducibly develop the surfaces of his form.

THE HEART AS AN ORGAN OF FLOW

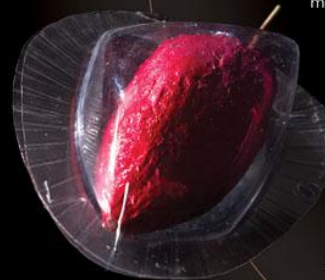
After he had discovered this new form, Frank Chester was not at all clear what its importance would be for the world. A quote from Rudolf Steiner guided him: 'Geometry is knowledge that appears to be produced by human beings, yet whose meaning is totally independent of them.' Chester continued to experiment for ten years more. Among the most important findings that he has discovered to date is the following: After he had seen that his seven-sided form can be harmonically integrated into a cube when it is oriented at an angle of 36 degrees, and that it appears to resemble a

The Venus and Bell together in a chalice.

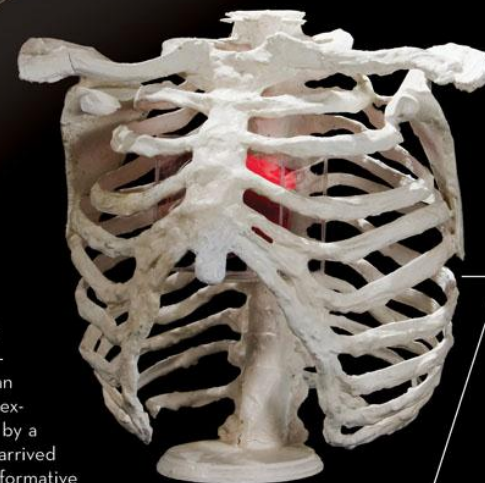


Through what he saw developing within the water, Frank Chester developed a sculpted model and then opened it in cross-section. This result reminded him immediately of an image of a vertical cross-section through the human heart. Driven by curiosity, his joyous experimental nature, and further inspired by a drawing from Rudolf Steiner, he finally arrived at a three-dimensional depiction of the formative forces which underlie the human heart and create its

asymmetric form through its muscular layers. His conclusion: the formative forces which form our heart muscle are active as vortices and are oriented and maintained through the seven-sided form discovered by him.



kind of heart shape when he dipped the wire frame model into a soapy liquid and created convex surfaces by expanding the enclosed soap bubble gently with a straw, he had an idea: He took a solid model of the expanded, seven-sided form and dipped it along its axis into a water-filled vortex chamber. When he spun it vertically, the resulting water vortex was stable. However, when he spun the form attached to a high-speed drill and introduced it into the water at an angle of 36 degrees, a type of pocket-shaped vortex developed on the side of the main water vortex.



The geometry of the Chestahedron shows why the heart is positioned at a particular angle in the chest.

Since Frank Chester developed this insight, the heart is no longer a pump. For him, it has instead become an organ of flow (regulation). If the heart were a pump, the paper-thin tissue at the apex of the left ventricle could never

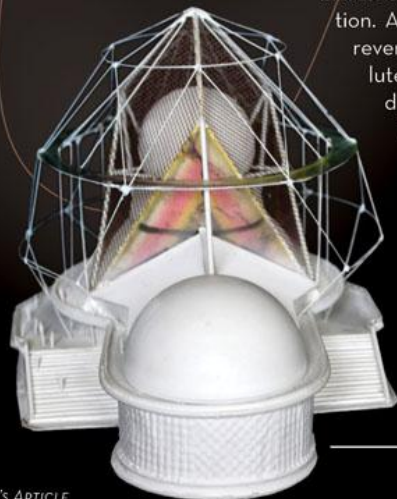
withstand the developing pressure. However, from the perspective of a vortex model of the heart, it becomes understandable why this part of the heart is never exposed to these higher pressure dynamics.

In the developing human embryo, blood is already streaming rhythmically through its blood vessels



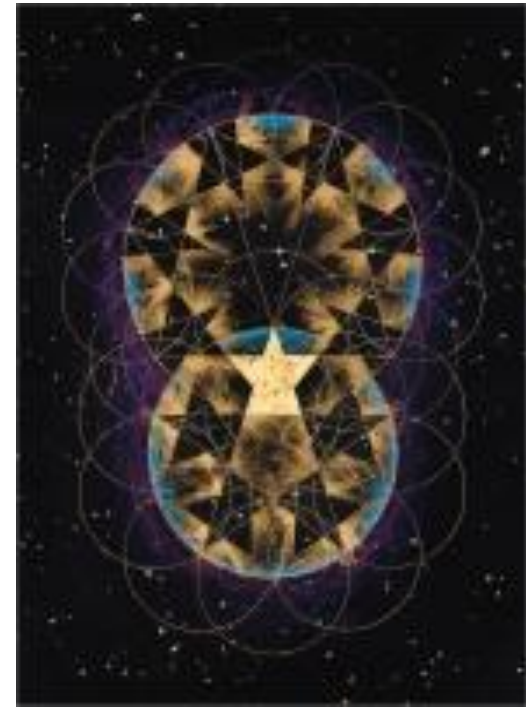
before the heart has even formed. Something other than the heart, therefore, must be responsible for this movement of the blood. The heart that develops later appears to function more like a balancing brake: blood streams into the left ventricle in a clockwise direction and then vortexes around itself, finally emerging from the left ventricle in the opposite, counter-clockwise direction. At the moment when the blood flow reverses, there is no movement: absolute stillness reigns. However, this is a dynamic rest. This is the exact moment, simultaneous in time and space, that for Frank Chester represents the eternally present heart-centered state in each human being.*

Frank has created many architectural designs using the Chestahedron.



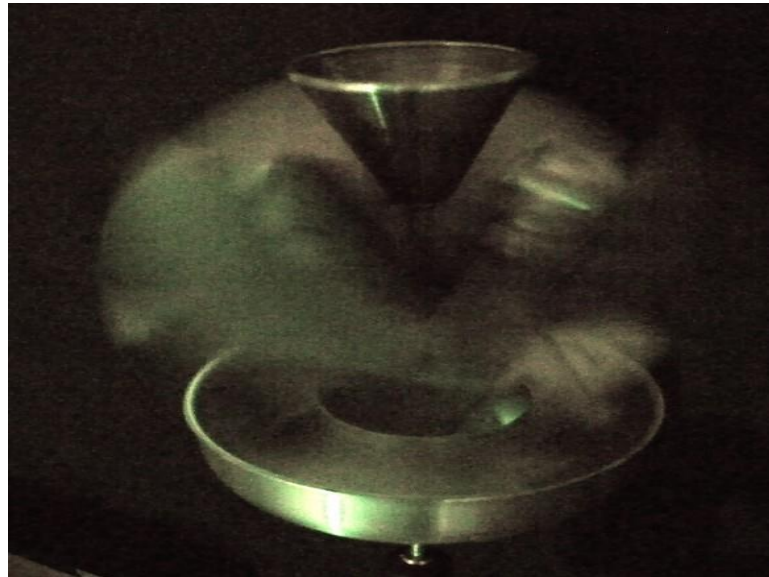
* END OF ULRICH MORGENTHAUER'S ARTICLE

- The chestahedron establishes a unique relationship between the numbers 5 and 7. This is embodied in the five prints that Frank has made which explore this theme via two interpenetrating circles.
- <http://frankchester.com/meditative-visualization-on-5-and-7/>
- <http://frankchester.com/2009/5-and-7-cycle-relationship/>

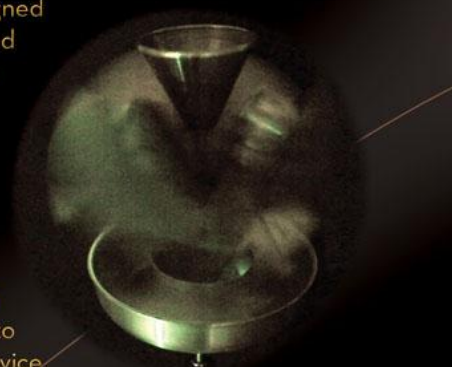


This geometry is the most profound newly developed configuration in the 21st century. Never before has a circle been divided into seven equal spaces using a pentagram as its base. Diameters of two circles and the distance between their centers derive from the Chestahedron.

Water purification the quantum way, through Frank's vortex generator



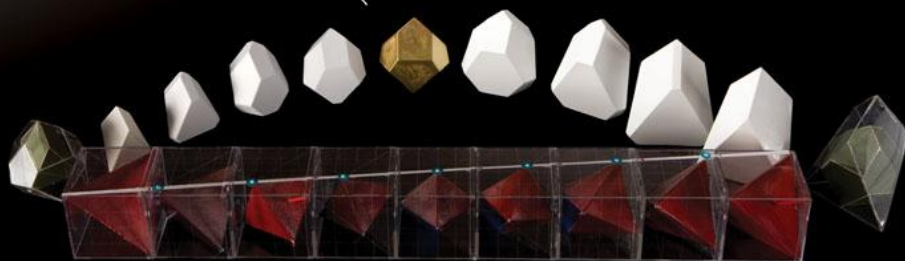
Frank Chester has invented a device, designed upon the geometry of the Chestahedron, called the Chesta Vortex Organizer (CVO). The CVO is meant to be utilized in biodynamic preparations, stirring, mixing, aeration and bio-augmentation. The device has two moving forms turning in opposite directions, 90 degrees from each other.



Frank has been given the opportunity to test the new device at Environment Ventures Marketing, Inc. in the Philippines. He has been invited to a professional laboratory environment which includes scientists, engineers, fabricators, and machines to produce and test many of his ideas.



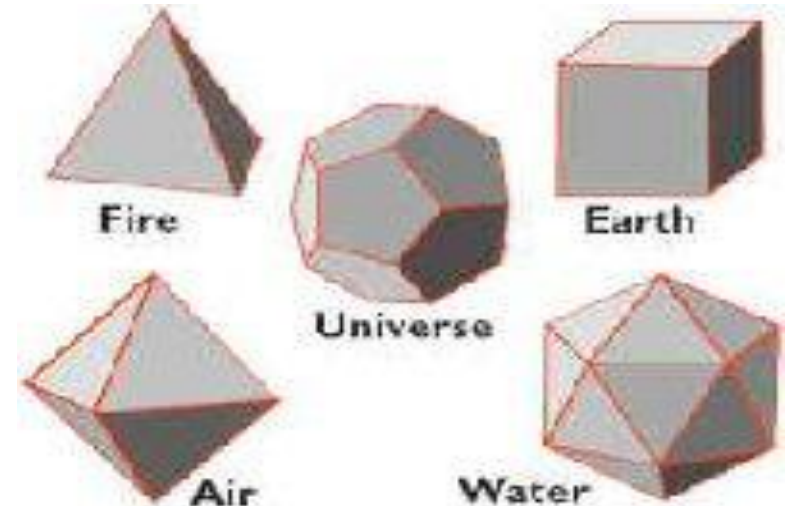
The dualization of the Chestahedron into the Decatria, and the Decatria into the Chestahedron.



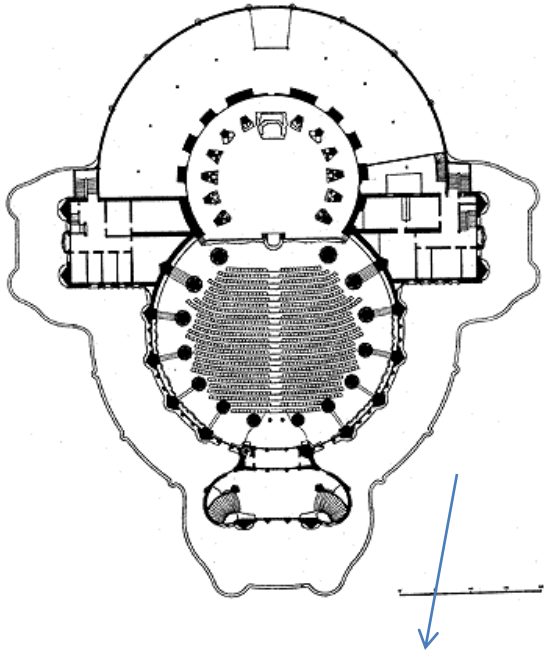
One way that the Chestahedron can be formed is by rotating a tetrahedron within a cube.

A Workshop with FC

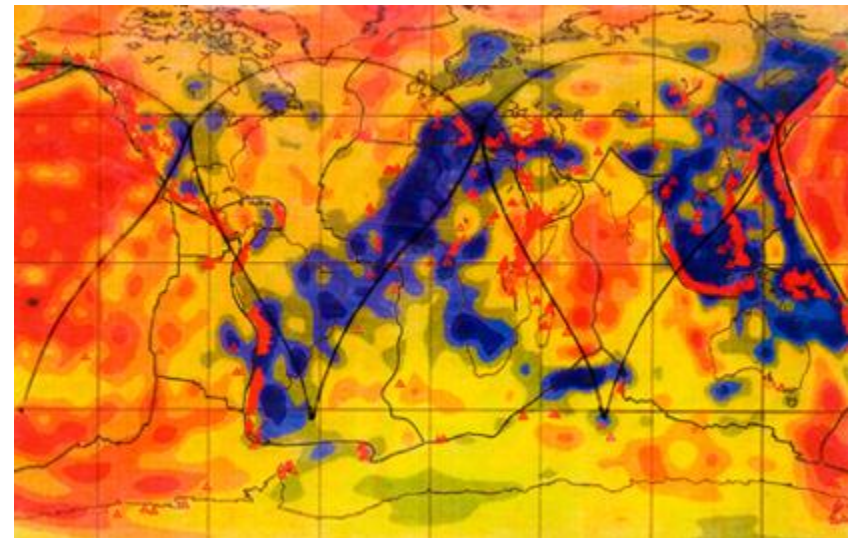
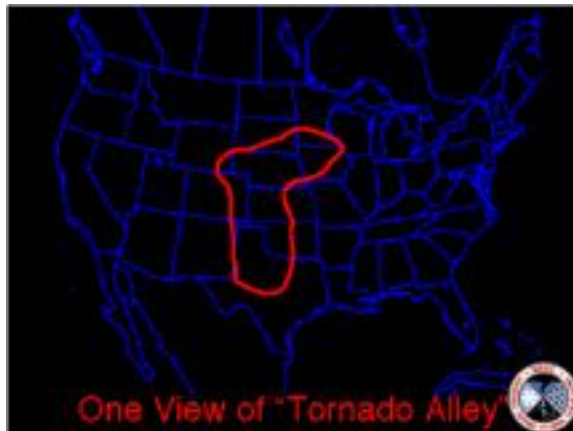
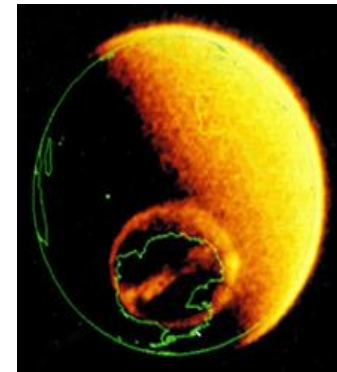
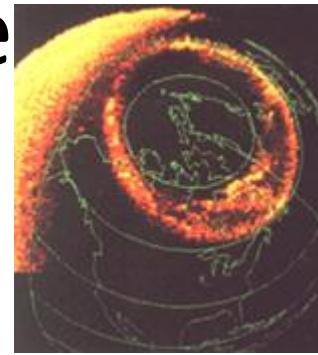
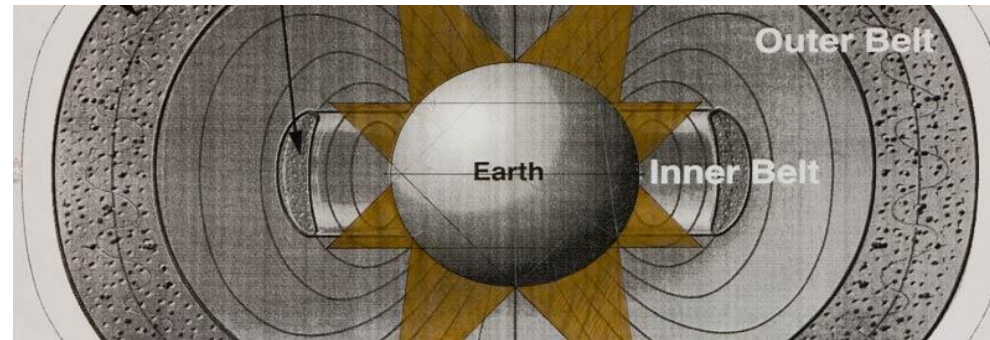
- You will leave this workshop with a physical form of your own creation and a more subtle and complex understanding of how transformation unfolds according to the archetypal patterning of the four elements: *Earth, Water, Air, and Fire*. Our goal is to inspire you and enliven your own everyday transformative work.
- This workshop is perfect for parents, teachers, therapists, social workers, and anyone interested in transformation.



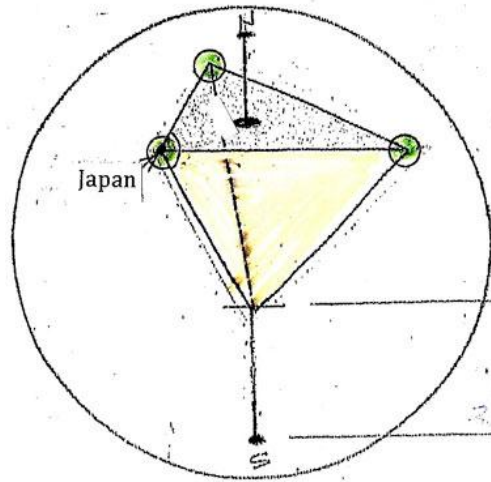
Transformative buildings... from the heart form or sacred geometries



Earth phenomena and the chestahedron

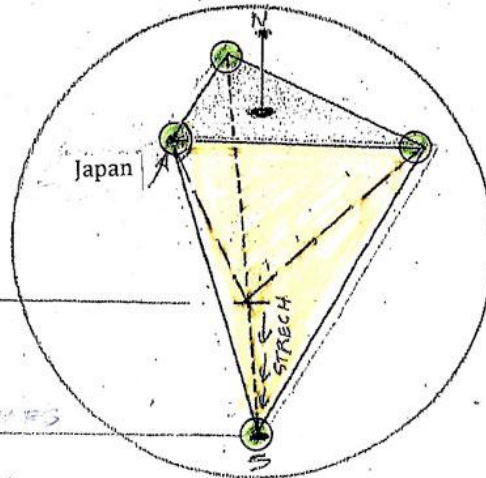


TETRAHEDRON, SOMETHING OF A TETRAHEDRON AND THE CHESTAHEDRON IN THE SPHERE OF THE EARTH



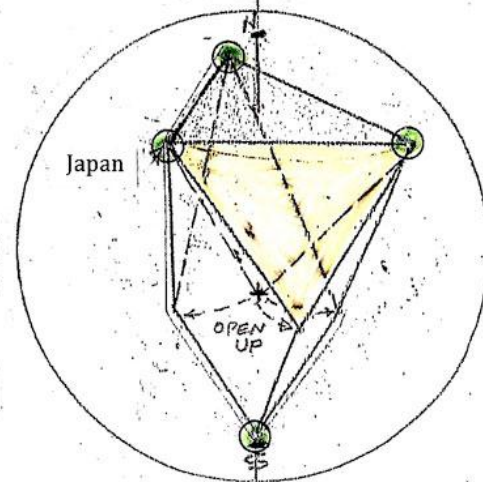
EXACT TETRAHEDRON

④ points touch the sphere
When all four sides have equal surface areas, which do not meet at the South Pole



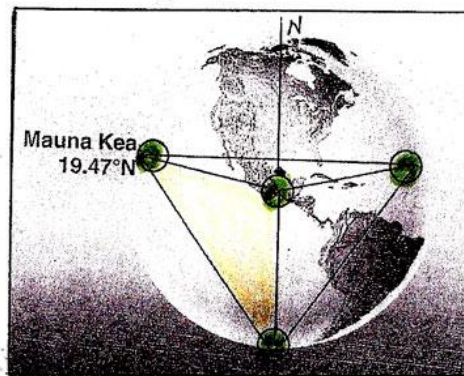
SOMETHING OF A TETRAHEDRON

④ points touch the sphere
When three sides of a tetrahedron are stretched down 3000+ miles to meet the South Pole



EXACT CHESTAHEDRON

④ points touch the sphere
When three sides of a tetrahedron open up to 94.8304° forming a 7-sided form with equal surface areas to meet the South Pole



④ points touch the sphere
Mauna Kea 19.47° N

Note:

- ① All top three triangles are the same size as seen in the sphere of the Earth above.
- ② Rudolf Steiner never mentions anything about two tetrahedrons together (Mer-ka-ba)
- ③ Rudolf Steiner notes two points on the Earth, Japan and the South Pole, four times.
- ④ Rudolf Steiner never speaks about Mauna Kea, Hawaii.

Earth evolution in Geometry



Rotating
Octahedron



Spherical
Octahedron



Vescia Piscis
(1st Day)



Tripod of Life
(2nd Day)



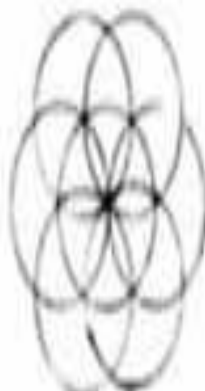
(3rd Day)



(4th Day)



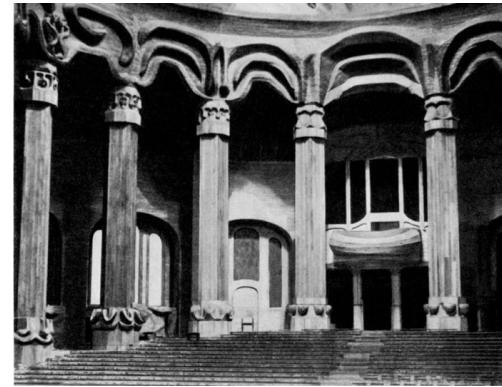
(5th Day)



Seed of Life
(6th Day)

Relation to the planets

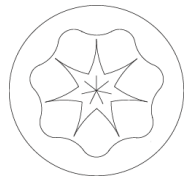
Steiner's seals at the Goetheanum are figures that relate to the planets...
the chestahedron is embedded in their 3-d forms and their transformation from one to the other



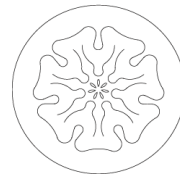
Saturn



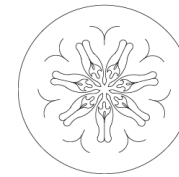
Sun



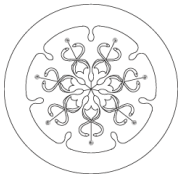
Moon



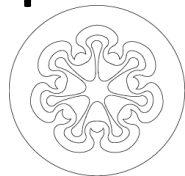
Mars



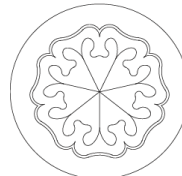
Mercury



Jupiter



Venus



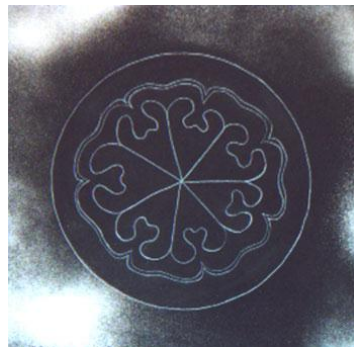
the planetary seals morphed from one to the next...

<http://www.dateastar.net/planetaryseals.html>

Planetary seals in 3-D



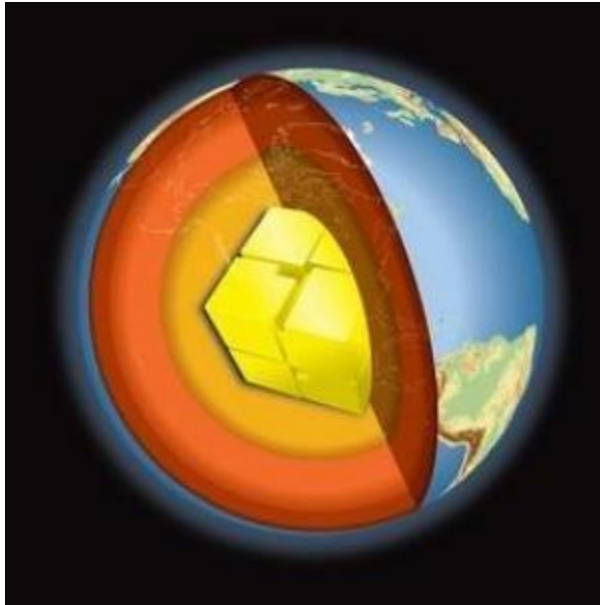
- The Venus sculpture evolves from a hidden unseen movement inside the first asymmetrical inversion of the seven-sided form (Chestahedron). It forms two retrogrades which create two curves that have the property of the golden mean and there is not one straight line. Finding this shape was the first indication that the Chestahedron was related to the geometry of the human heart. The Venus shows two hearts constantly interacting with each other.



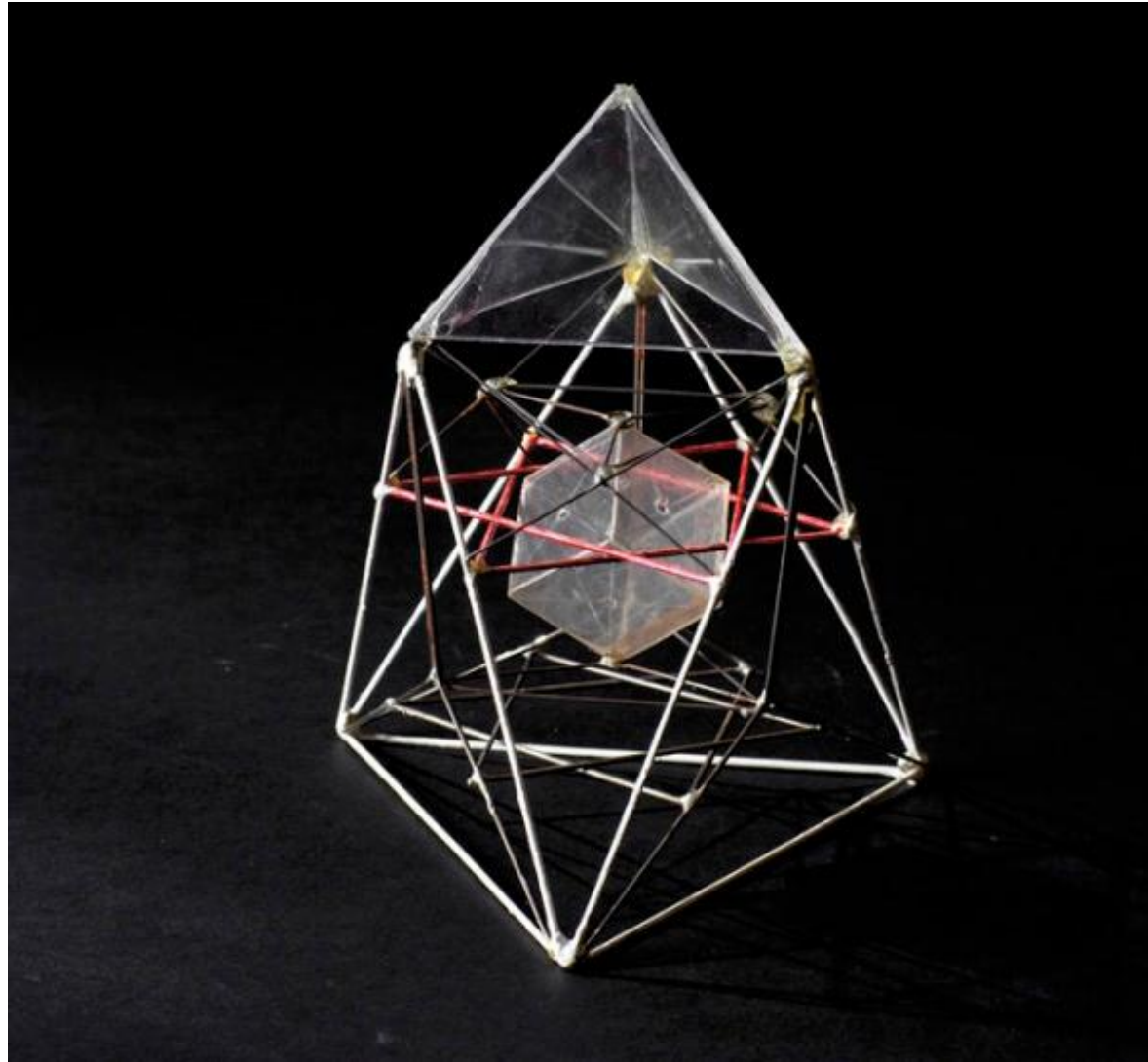
Saturn



Geometry inside earth, not a sphere?



The Chestahedron accommodates other
basic forms and recapitulates in other
earth objects



The human Heart tilts, is not at the center, is not a pump... the chestahedron helped us see why!

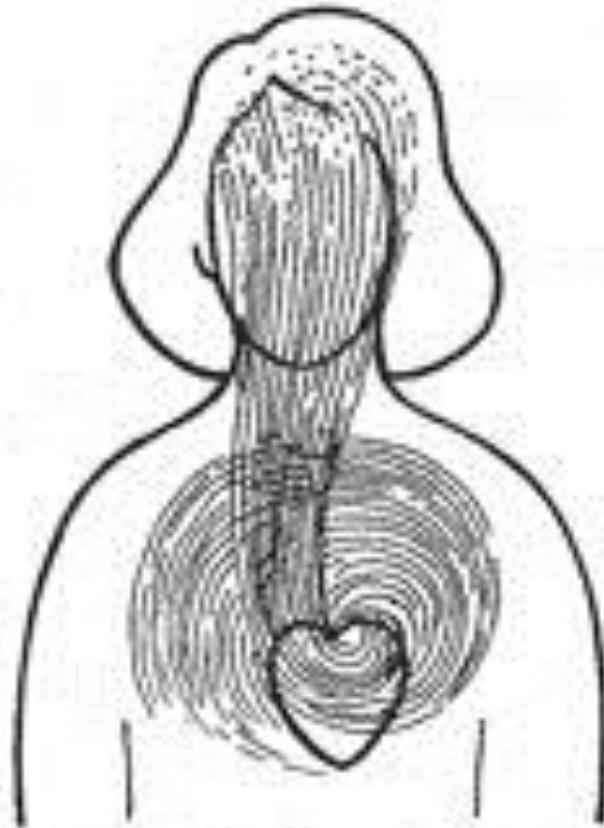


The chestahedron was developed from a tetrahedron turning inside a cube whose axis is centered at the square root of 3, and the square root of 3 in the cube is 36 degrees of arc from the horizontal plane. This explains for the first time why the heart is located on the left side of the body.

“The heart is not a pump, but an organ in which etheric space is created, so that the blood is sucked into the heart rather than pumped”



The heart is developing a fifth chamber which is for our future...



Second etheric stream

- *“In our time there are certain changes taking place in the heart, by which **gradually a fifth chamber will develop**. In this fifth chamber man will have a new organ which will allow him to **control life forces in a different way** than is possible at the moment.” “All that happens in the moral life, and all that happens physically in the world...the moral and the physical....are found in their real union when we learn to understand all the configurations of the human heart.” Rudolf Steiner*
- “The radiation from this etheric organ of the heart is actually developing into a spiritual sense organ. A new sense organ is developing in this etheric heart, and this is the only organ by which man is able to sense and to recognize the Etheric Christ”.
Ehrenfried Pfeiffer December 17, 1950

Fifth chamber trivia...



Bee the only one known among animals with a fifth chamber of the heart

***"Bee Boy" Born
With Bee Heart***



Russian baby Vanya Maryin [was born with a five chambered heart](#), a structure only found in bees. Oddly enough little Vanya comes from a family of bee-keepers.

Earth forms and processes solidified in the sculpture of FC



The grail of the heart

Videos... for initial exploration

- http://www.youtube.com/watch?v=C5b_1BQzKTI
FC Sacred Geometry 4
- <http://www.youtube.com/watch?v=1yCpxFRBW1Y&feature=related>
sacred geometry 0
- <http://www.youtube.com/watch?v=QZUmk-GiC30&feature=related>
imageneering
- <http://www.youtube.com/watch?v=cWaVQppMT1M&feature=related>
slideshow
- <http://www.youtube.com/watch?v=ysYkKvwh2a8&feature=related>
meditative visualization on 5 and 7
- <http://waldorfschool.tv/frank-chester-transformation-alchemy/>
Transformation alchemy

Frank Chester unlocks the key to Earth, Humans and the Cosmos !

